

STRUCTURAL ASPECTS OF THE VEGETATIVE ORGANS OF *CRYPTOCORYNE WENDTII* DE WIT. (ARACEAE)

RODICA BERCU

Faculty of Natural and Agricultural
Sciences, "Ovidius" University, Constantza
University Alley, No. 1, B, 900470, Constantza
E-mail: prof.rodicabercu@gmail.com

Key words: anatomy, aquatic plants, structure, vegetative organs, *Cryptocorynewendtii*

ABSTRACT

The paper presents structural aspects of the vegetative organs (adventitious root, stem and leaf) of a monocot herb, native to Sri Lanka and Thailand, namely *Cryptocorynewendtii* de Wit. It is a green variety of *Cryptocorynewendtii*, growing both submerged and emerged in its native regions. In our country the plant is known as an aquarium plant. The material fixation and processing was done according to the usual protocol of the Vegetal Morphology and Anatomy Laboratory belonging to the Natural Sciences Department of the our faculty. The adventitious root has a primary monocot structure with small intercellular spaces. The short stem vascular system consists of amphivasal bundles to the center and few collateral bundles to periphery. The petiole exhibits epidermis with regularly arranged cutinized cells, without intercellular spaces, covered by a thick cuticle and poor developed stele vascular system. The leaf mesophyll is homogenous (isobilateral) type, with small intercellular spaces and a poor developed midrib collateral bundle with few conductive elements. The mechanical tissues almost lack. The petiole and blade have sclerenchyma groups of cells below the epidermis and for the blade to the lower epidermis.

INTRODUCTION

Cryptocoryne Fisch. ex Widler, known as water trumpet, is a genus of about 58-60 species, belonging to Araceae family. *Cryptocorynewendtii* de Wit is a herb plant native to Sri Lanka and Thailand. It first was described by the botanist Hedrik de Wit in honor of Albert Wendt an aquarium hobbyist and writer (Seah, 2005; Witt, 1990).

The plant lives submerged but sometimes emerges, with completely different shapes and very easily adaptable to environmental conditions (De Graaf, 1987). The plant can reach up to 30 cm and can grow normally with both optimal and intense lighting. Characteristically, *C. wendtii* has a brown color of the rachis and petiole, contrasting with the green color of the rest of the leaf. Dötsch, 1984; Muhleberg, 1982) (Fig. 1).

The radicular system is strongly branched. The short stem (crown) develops 5-10 leaves which, depending on the environment, are very different in shape, size and color (Manthei, 2010). Thus, the submerged plants are smaller and the leaves reach up to maximum of 10-15 cm in length, and can have brown strips with small spots or may be uniform pinkish or brown-olive in color. Leaves of high emergent plants are light green-colored. The leaves may be oval or slightly elongated, with sharp pointed apex and sinuous margins. When the plant grows emerged it blooms rapidly, producing dense flowers grouped in spadix type short inflorescence (5-8 cm). It may bloom in submerged condition as well, but flowers do not open (Möhlmann, 1987; Randell, 2000).

In general, *Cryptocorynewendtii* reproduction is vegetative for the submerged plants and a sexually reproduction for those of the emergent plants flowers. At a temperature below 22°C and at a low humidity, the plant growth is embarrassed. In winter, the species can withstand temperatures below 15°C, but the optimal temperature is 24-30°C. In heritable

state, the plant can withstand even lower temperatures without losing the leaves, but providing optimal humidity. In a submerged state, the plant can hardly withstand the low temperatures, but with their flower cover loss (Kane, 1993; Möhlmann, 1987).



Fig. 1. Natural view of *Cryptocoryne wendtii* de Wit. (Web 1).

In literature are generally little information on this aquatic plant anatomy, many papers dealing with them in terms of morphological and taxonomic studies (Fassett, 1955; Haynes & Holm-Nielsen, 1986/1994; Somogyi, 2006). In our country, ample studies of aquatic spontaneous aquatic plants were held by Sârbu et al. (2005) and Bercu(2009a,b/2010/2015)most recent aquarium anatomical studies.

MATERIAL AND METHODS

The plant belongs to the Vegetal and Morphological Laboratory aquarium of the Faculty of Natural and Agricultural Science. Small pieces of roots, stem and leaf (petiole and lamina) were fixed in FAA (formalin: glacial acetic acid: alcohol 5:5:90). Cross sections and longitudinal sections of the leaf were performed by free hand made technique (Bercu and Jianu, 2003). The samples were stained with alum-carmin and iodine green and mounted in glycerinated gelatin. Anatomical observations and micrographs were performed with a BIOROM–T bright field microscope, equipped with a Topica 6001A video camera.

RESULTS AND DISCUSSION

Cross section of the adventitious root discloses the outermost epidermis (rhizodermis) with a single layer of medium cells with slightly thick cells. The cortex is differentiated into two zones: the first zone consists of three layers of cells with slightly thickened walls (cutis), followed by a multilayered parenchyma with small intercellular spaces (Fig. 2, A). Such as other monost roots (Batanouny, 1992; Bavaru and Bercu, 2002; Niculescu, 2009) the endodermis is formed by a single layer of U-shaped cells with lignified radial and inner walls. In front of the xylem vessels passing cells are present. The vascular bundles consists of xylem and phloem bundles are radially and alternately arranged (Fig.2, B).

The short stem, in cross section, discloses a well developed parenchyma storage tissue (abundance of starch grains). In the basic parenchyma are embedded amphivasal vascular bundles (leptocentric bundles) (the phloem is surrounded by xylem) and few amphicribal bundles (collateral vascular bundles) to the periphery (Fig. 3, A, B).

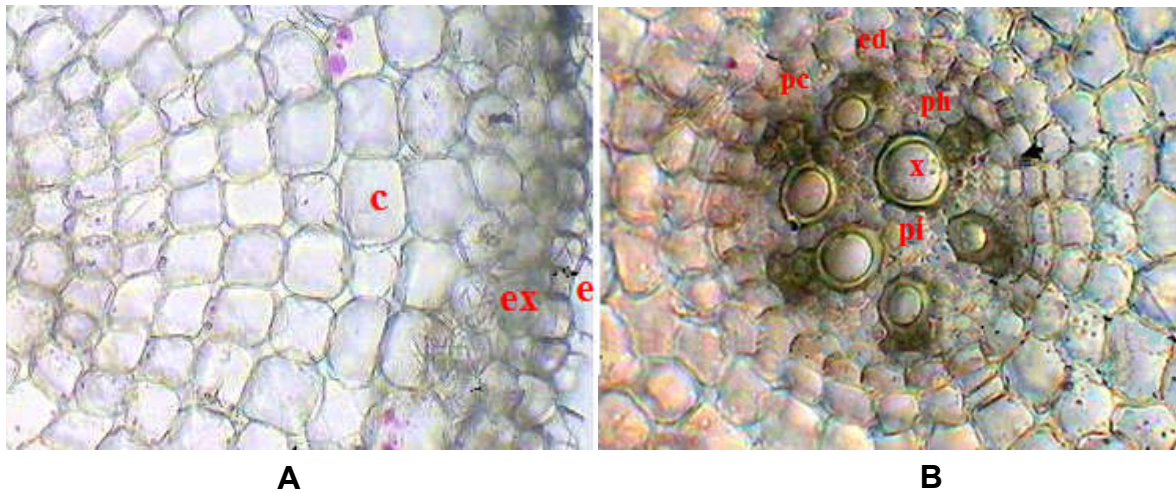


Fig. 2. Portion with epidermis and cortex (A, x 250). The stele (B, x 270): c- cortex, e- epidermis, ed- endodermis, ex- exodermis, pc- pericycle, ph- floem, pc- periciclu, pi- pith.

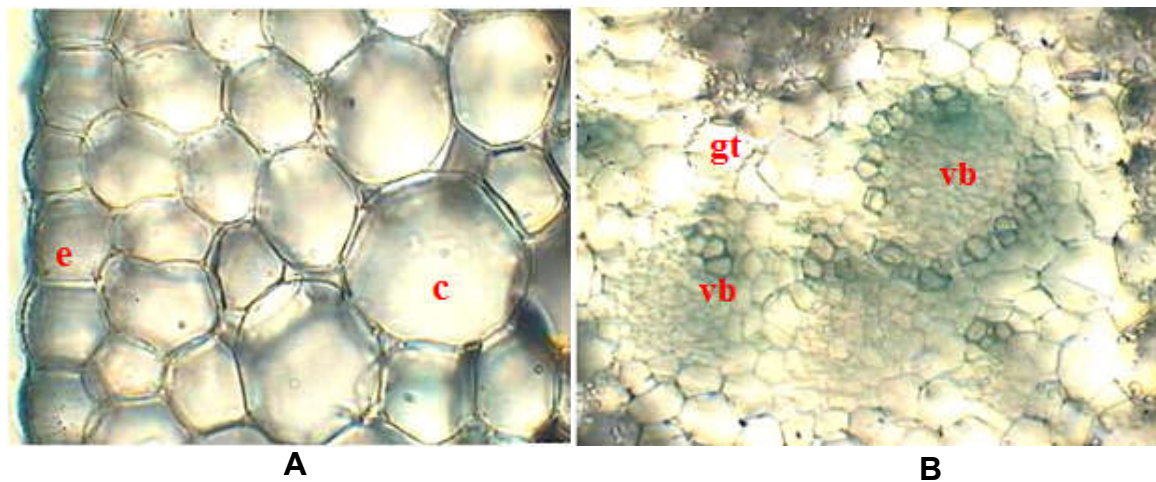


Fig. 3. Portion with epidermis and cortex (A, x 370). Portion of the stem (B, x 170): c- cortex, e- epidermis, gt- ground tissue, vb- vascular bndles.

The leaf. The petiole in cross section exhibits to the exterior a unistratous epidermis with regularly arranged cutinized cells, without intercellular spaces, covered by a thick cuticle. Long and soft bristles hairs (hirsute hairs) appear from place to place (Fig. 4, A), followed by the cortex consisting of a number of layers of cells. The first layer of cells possess small parenchyma cells, beneath the epidermis with few chloroplasts. It is followed by 3-4 layers of round-oval, large parenchymatous cells with more or less air spaces characteristic of aquatic plant (Fig. 4, B). In this parenchyma basic tissue is the stele which is formed by a number of variable small poorly developed vascular collateral bundles (few xylem and phloem elements). In the vicinity of the vascular bundles are some sclerenchyma groups of cells with mechanical role (Fig. 4, B, C).

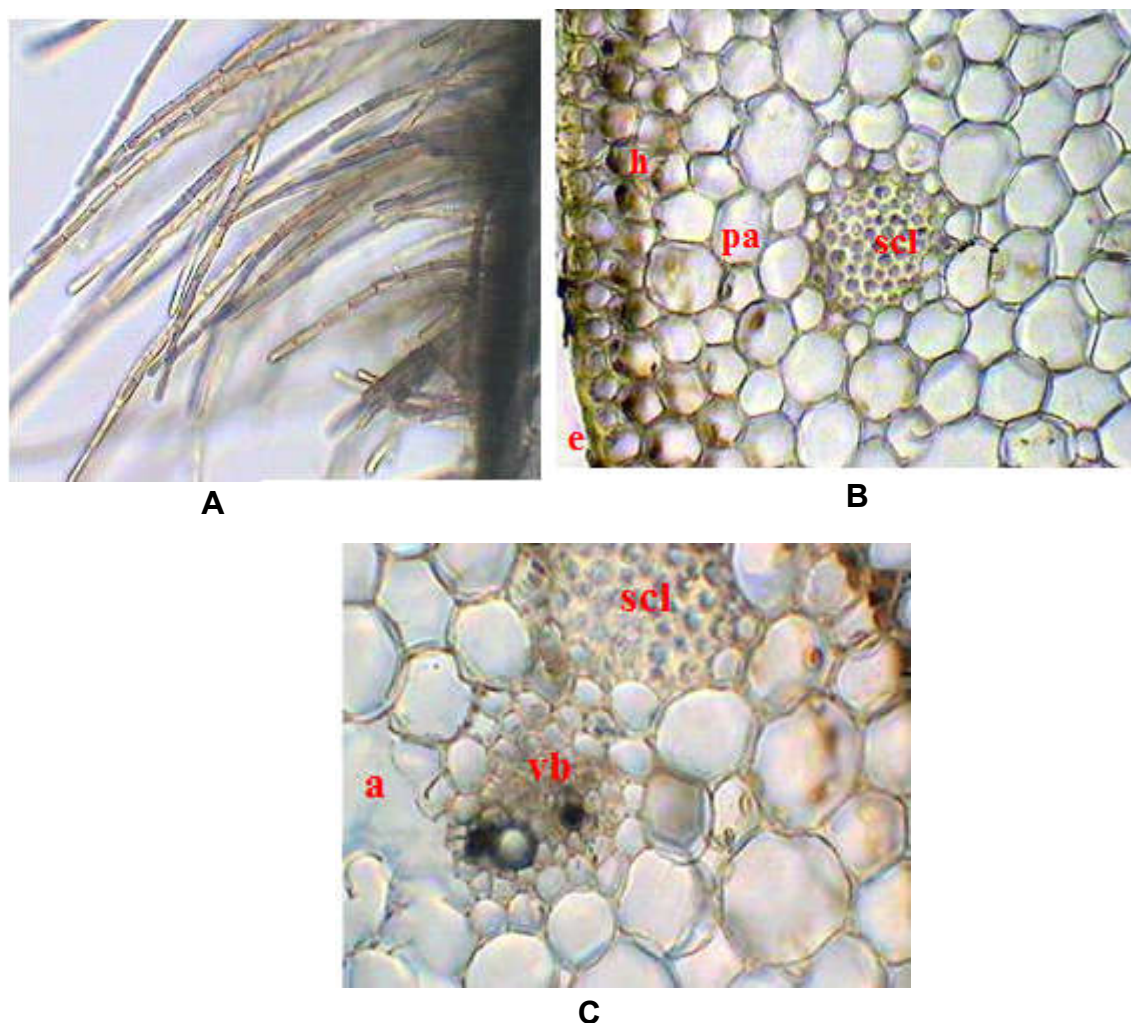
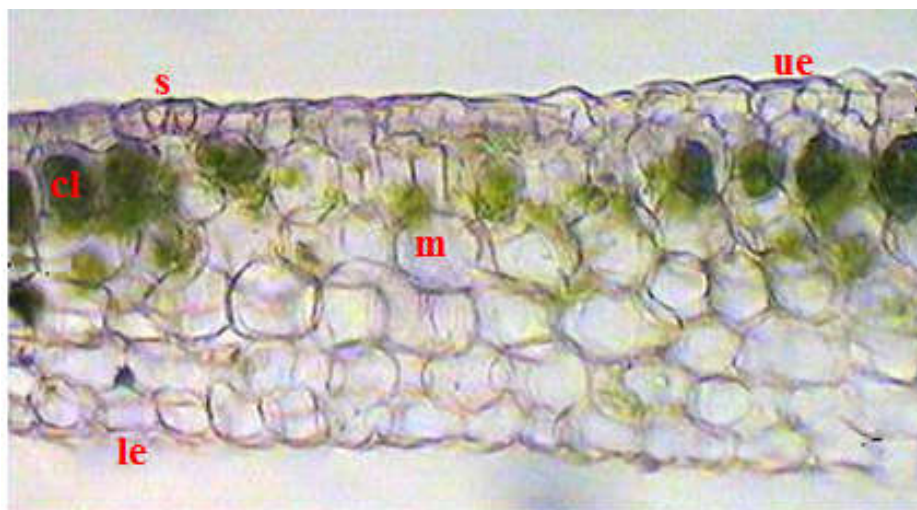


Fig. 4. Cross sections of the petiole. Hirsute petiol hairs (A, x 500). Portion with epidermis and cortex (B, x 390). A single vascular bundle (C, x 500): a- aerenchyma, e- epidermis, h- hypodermis, pa- parenchyma, scl- sclerenchyma, vb- vascular bundle,

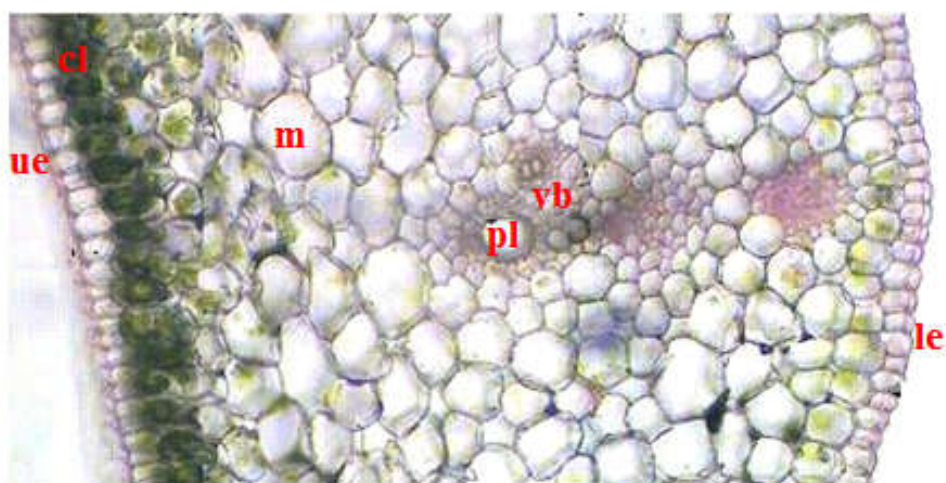
The blade, in cross section, exhibits the usual succession of tissues: two unistratous epidermis (upper and lower) and the mesophyll between them. The epidermal cells are covered by a more or less thick cuticle. The epidermis continuity is broken by the presence of stomata. The mesophyll is homogenous with irregular in shape cells and arranged very loosely with conspicuous intercellular spaces. Below the upper epidermis are 2-3 layers of cells with a number of chloroplasts (chlorenchyma tissue) (Fig. 5, A). The lower epidermis is slightly prominent (Fig. 5 B). As the mesophyll is undifferentiated and is alike at both surfaces, the leaves are called as isobilateral leaves (Fig. 5, B) such was described by Bercu (2009a,b; 2010, 2015) in other aquatic plants mesophyll.

The rest of the cells, especially those in the midrib area, are larger with cellulose thin walls, fewer chloroplasts and with not too large intercellular spaces between them. On the margins, the mesophyll is narrow to 4 layers of cells, two of them with more chloroplasts (Fig. 5, A).

The midrib is represented by a closed collateral bundle with few conductive elements. Xylem faces towards the upper epidermis and is formed by 2-4 xylem vessels and a large protoxylem lacuna. Phloem faces towards the lower epidermis and is represented by few phloem vessels. Sclerenchyma group of cells are present below the vascular bundle with mechanical role (Fig. 5, B).



A



B

Fig. 5. Portion of the leaf with mesophyll (A). The midrib zone of the blade (B) (A, B, x 210): cl- chloroplasts, m- mesophyll, le- lower epidermis, pl- protoxylem lacuna, s- stoma, ue- upper epidermis, vab- vascular bundle.

CONCLUSIONS

The adventitious root has a characteristic monocot primary structure, with a well-developed aerenchym tissue around the stele. The stem structure is characteristic to all aquatic plants with amphyvasal and collateral bundles.

The petiole exhibits a unistratous epidermis with regularly arranged cutinized cells, without intercellular spaces, covered by a thick cuticle and poor developed stele vascular system..

The leaf mesophyll is homogenous (isobilateral) type, possessing small intercellular spaces mostly near by the midrib vein and a poor developed midrib collateral bundle with few conductive elements. The mechanical tissues almost lack, only the petiole and blade has sclerenchyma groups of cells, bellow the epidermis and respectively bellow the upper respectively the lower epidermis for the blade midrib.

Crypocorynewendti vegetative organs has revealed some specific aquatic characters such as the presence of the large intercellular spaces with air chambers, the lack of proper roots but the presence of adventitious roots, a short stem and the presence of stomata for the petiole and leaf.

BIBLIOGRAPHY

1. **Batanouny, K.H.**, 1992 - *A Text Book of Botany/Plant Anatomy*, 4th edition, Cairo University Press, Cairo.
2. **Bavaru, A., Bercu, R.**, 2002 - *Morphologiași anatomiaplantelor*, Edit. Ex Ponto, Constanța.
3. **Bercu, R.**, 2009a - *On Anubias barterivar. nana* (Engler) Crusio anatomy, *Studii și Cercetări Științifice, Ser. Biologie vegetală*, vol. 16: 49-52, Universitatea din Bacău, Edit. Aalma Mater, Bacău.
4. **Bercu, R.**, 2009b - *Characteristic features of Acorus gramineus Sol. ex Aiton.*, *Natura Montenegrina, Podgorica*, 8(2): 83-90.
5. **Bercu, R.**, 2010 - *Histoanatomy of Bacopa caroliniana (Walt.) Robins (Scrophulariaceae)*, *Studii și Cercetări Științifice, Ser. Biologie vegetală*, vol. 18: 99-102, Universitatea din Bacău, Edit. Aalma Mater, Bacău.
6. **Bercu, R.**, 2015 - *Histoanatomical features of the aquatic plant Helanthium tenellum (Mart.) Britt. (Alismataceae)*, *Annals of West University of Timișoara, ser. Biology*, 18(2): 67-72.
7. **De Graaf, A.**, 1987 - *The occurrence of Cryptocoryne (Araceae) on Sri Lanka*, *Fama*, 4: 11-87.
8. **Dötsch A.** 1984 - *Cryptocoryne wendtii de Wit (Pflanzenportrait)*, *Aqua-Planta* 3-84: 17-18.
9. **Kane, M.**, 1993 - *Tissue culture propagation of Cryptocoryne species*, *The Aquatic Gardener*, 6: 5-93.
10. **Manthe, i D.**, 2010 - *Plant of the month – Cryptocoryne wendtii de Wit*, *Tropical Fish Magazine, Issue September, 2010*.
11. **Möhlmann, F.** 1987 - *Cryptocorynes grown emerse*, *Today's Aquarium*, 4: 87.
12. **Muhleberg, H.**, 1982 - *The Complete Guide to Water Plants*, EP Publishing Ltd., Germany.
13. **Niculescu, Mariana**, 2009 - *Morfologia și anatomia plantelor*, vol. I, Edit. Sitech, Craiova
14. **Niculescu, Mariana** - DIVERSITY, DISTRIBUTION AND ECOLOGY OF THE FRESHWATER NATURAL HABITATS FROM SOUTHERN OF OLTENIA, ROMANIA- SCIENTIFIC PAPERS-SERIES A-AGRONOMY Volume: 59 Pages: 116-121, Published: 2016, ISSN- 1222-5339, https://apps.webofknowledge.com/Search.do?product=WOS&SID=C2iDut4m8HPpdxgZPs8&search_mode=GeneralSearch&prID=05baa3a9-21cf-4989-81bf-daf67bb9f815
15. **Niculescu, Mariana, Făgăraș Marius** - THE GRASSLAND NATURA 2000 HABITATS FOUND IN LESPEZI QUARRY AND THE SURROUNDINGS, DAMBOVITA COUNTY 15th International Multidisciplinary Scientific GeoConference SGEM 2015, www.sgem.org, SGEM2015 Conference Proceedings, ISBN 978-619-7105-39-1 / ISSN 1314-2704, June 18-24, 2015, Book5 Vol. 1, 877-882 pp, DOI: 10.5593/SGEM2015/B51/S20.116
16. **NICULESCU, Mariana** - *METODE DE CERCETARE ȘI PREZENTARE A FLOREI*, Ed. Sitech, Craiova, 2009, 119 p., ISBN 978 606-530-322-5
17. **Randall, K.**, 2000 - *Cryptocoryne, Family Araceae, Aquarium Frontiers*, pp.1-100.
18. **Sârbu, A., Smarandache, D., Janauer, G., Pascale, G.**, 2005 - *Plante acvatice și palustre din sectorul românesc al Dunării*, Edit. Universității din București, București.
19. **Seah, X.**, 2005 - *Introduction to the Cryptocoryne genus (fam. Araceae)*, *Aqua Babble, Aquarium Club of Edmonton, Singapore*.
20. **Wit, H. C. D. de**, 1990 - *Aquarienpflanzen*, 2. Auflage Ulmer, Stuttgart.
21. **Web 1** http://en.academic.ru/pictures/enwiki/67/Cryptocoryne_wendtii.JPG