

ASPECTS OF WHEAT PRIMARY OFFER IN DOLJ COUNTY (2009 - 2011)

MEDELETE D.M., PÂNZARU R.L.

Faculty of Agriculture and Horticulture, University of Craiova

Key words: area, total production, average production, wheat

ABSTRACT

This paper aims to highlight the role and place of Dolj County, in the regional production of wheat. For this, in the interval 2009 - 2011, are analyzed the components of primary supply of wheat: area cultivated, total production and average yield.

Choosing the theme is based on the fact that Dolj county, is a representative component of The Development Region South - West Oltenia, with significant agricultural potential, given its surface, but also the production potential of soil units of the region analyzed. It is worth mentioning that the county has substantial potential also in terms of qualitative aspects that can be achieved in the production of wheat.

INTRODUCTION

For agricultural holdings in Romania, wheat are important for food, industrial, fodder, agricultural technology-technology, export and as a source of profit.

If that is needed the demand of wheat to be satisfied there must be a corresponding offer. For wheat product offering size is dependent on two factors: area cultivated and yield per hectare. These factors have led to the formation and evolution of grain markets. Regarding the proper functioning of the wheat market, it can be said that it is determined mostly by modifying the structure of supply and demand. Regarding this situation an important role belongs the ratio between wholesale market and market so-called peasant, in which the largest share is currently a self-consumption. Wheat marketing forms may relate to direct sales from the farm gate, selling rural markets, selling through commercial companies large processing units market, the foreign market.

Farmers individuals tend to form a favorable environment for a free and fair market. Due to the large number and small size of farms, private farmers have limited economic powers on offer of wheat. These producers cannot influence any conditions of sale of quantities of wheat obtained or the conditions for the purchase of inputs.

METHOD AND MATERIAL

In order to achieve the work to operate with a system of indicators to highlight specific primary supply of wheat - area cultivated, total production and average yield.

Therefore were collected quantitative data on the volume achieved at regional and county level.

The data collected and analyzed, covers the period 2009-2011, operating with average of period. Media was determined using the following relationship for calculating:

$$M = \frac{X_1 + X_2 + \dots + X_n}{n}$$

RESULTS AND DISCUSSIONS

In the case of Dolj County of primary offer for wheat is based on data for acreage, total production and average production achieved.

Dolj County has cultivated a surface between 168519 ha and 186663 ha of wheat (2009 and 2010 respectively), the average being 177971 ha - Table 1. It can be seen that the dynamics is dominated by the values of the indices above par for components, except

for average of period and year 2011 for mobile base index - 99.6 and 95.8% respectively. Outrunning of comparison term were: 1.10 times in 2010, 1.06 times in 2011 and 1.05 times average of period - Figure 1.

Table 1.

DOLJ COUNTY, WHEAT - Cultivated area (ha)*					
No.	Year	Effective	Dynamic		% beside regional level
			lbf	lbn	
1	2009	168519	100	100	43,8
2	2010	186663	110,8	110,8	45,8
3	2011	178731	106,1	95,8	50,6
4	AVERAGE 2009-2011	177971	105,6	99,6	46,6

*<http://www.dolj.insse.ro/cmsdolj/rw/pages/statReg.ro.do>

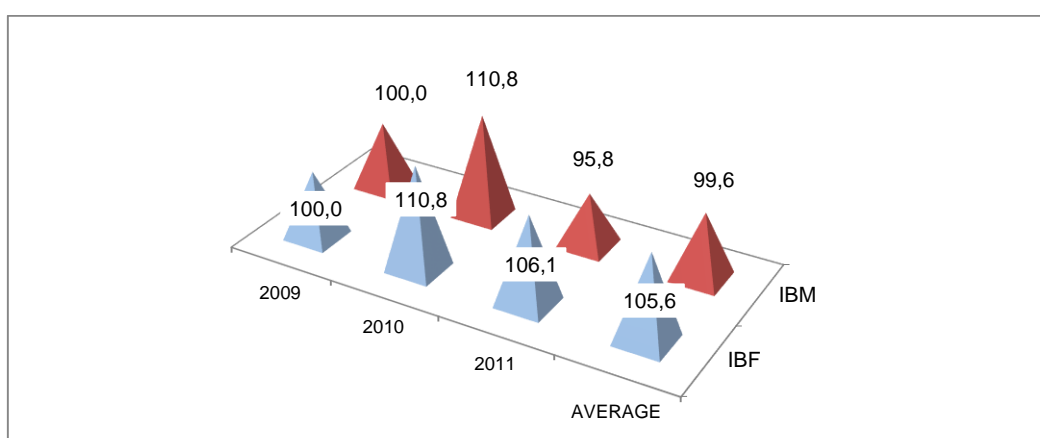


FIG. 1. WHEAT. DOLJ COUNTY - Dynamic of cultivated area (%)

Reporting the situation of the county to regional context, it can be seen that Dolj is the main wheat growing area, the county holding an average share of 46.6% of the regional area - Fig. 2. The annual weights were 43.8% in 2009, 45.8% for 2010 and 50.6% in 2011.

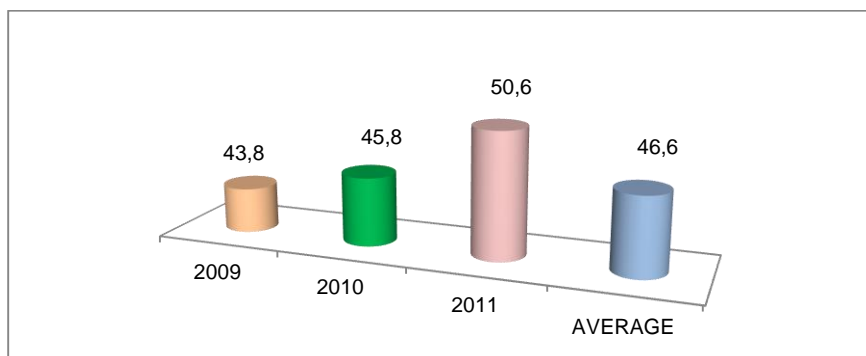


FIG. 2. WHEAT. DOLJ COUNTY - share in the regional area (%)

Dolj County is characterized by a total production of wheat between 434261 and 543848 t in 2009 and 2011 respectively, the average of period being 488848 t (Table 2). Based on annual quantities obtained it was formed the dynamics of the indicator that highlights the predominance of above par values for component index, except for those with mobile bases - for period average (89.9%). Exceeding the comparison term were 1.12

times in 2010, 1.25 times for the year 2011 and 1.12 times for the period average compared with the first term of the dynamic series - fig. 3.

Table 2.

DOLJ COUNTY, WHEAT - Total production (t) *

No.	Year	Effective	Dynamic		% beside regional level
			lbf	lbn	
1	2009	434261	100	100	43,3
2	2010	488435	112,5	112,5	48,3
3	2011	543848	125,2	111,3	48,0
4	AVERAGE 2009-2011	488848	112,6	89,9	46,6

*<http://www.dolj.inss.ro/cmsdolj/rw/pages/statReg.ro.do>

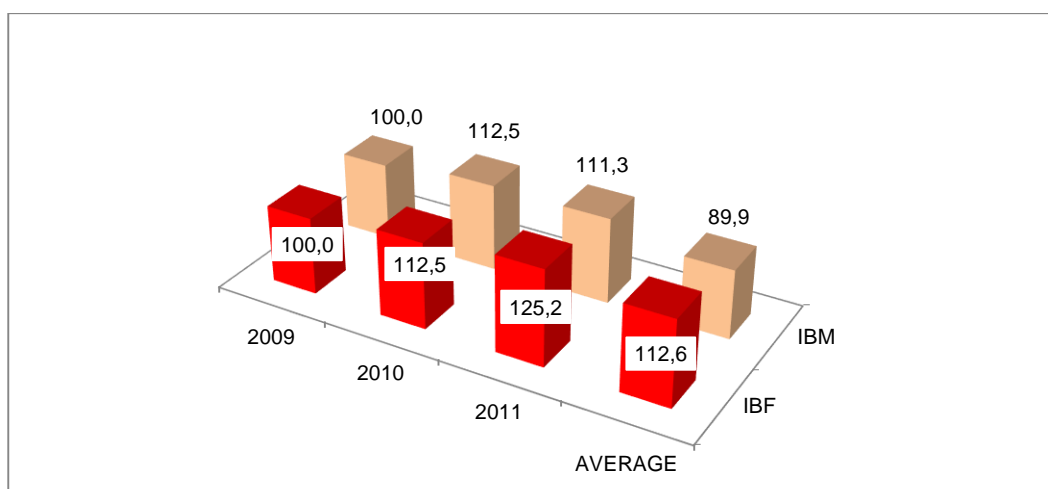


FIG. 3. WHEAT. DOLJ COUNTY - total production dynamics (%)

In case the report is made for county to the regional situation can be seen that, Dolj has held substantial shares as follows: 43.3% in 2009, 46.6% for the period average, 48.0% for 2011, and 48.3% in 2010 - fig. 4.

The third component of the primary offer of wheat - the average production in Dolj, is presented in Table 3.

Average of the indicator was 2747 kg / ha, with extreme levels of 2577 kg / ha in 2009 and 3043 kg / ha for 2011.

It is noteworthy, in dynamics, preponderance of indices above unit - advancing of the report terms being 1.06% in 2010, 18.1 and 16.3% for 2011, 6.6% on the period average - compared with the first term of dynamic series. The only value index sub-unitary is specific to the mobile base (90.3%) to the average period - fig. 5.

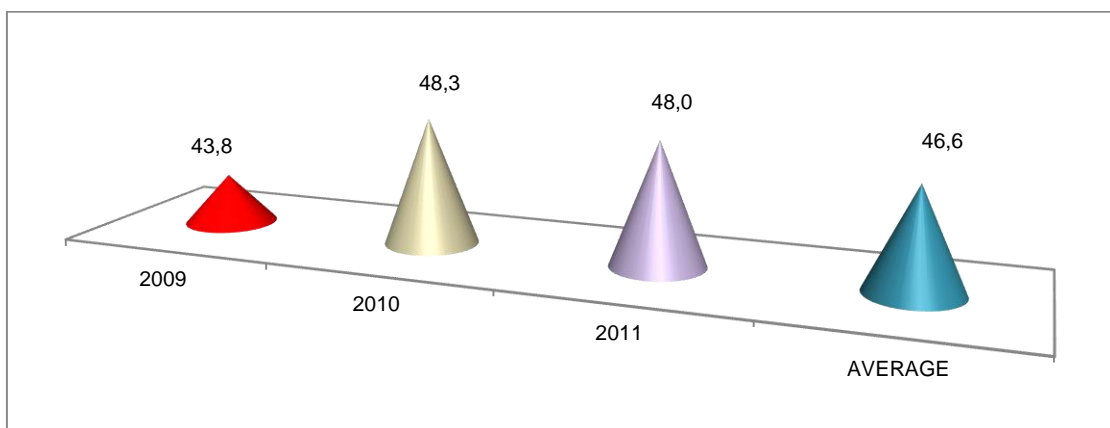


FIG. 4. WHEAT. DOLJ COUNTY - share in the regional production (%)

Table 3.

DOLJ COUNTY, WHEAT - Average yield (kg / ha) *

No.	Year	Effective	Dynamic		% beside regional level
			lbf	lbn	
1	2009	2577	100	100	99,0
2	2010	2617	101,6	101,6	105,6
3	2011	3043	118,1	116,3	94,8
4	AVERAGE 2009-2011	2747	106,6	90,3	100,04

*<http://www.dolj.insse.ro/cmsdolj/rw/pages/statReg.ro.do>

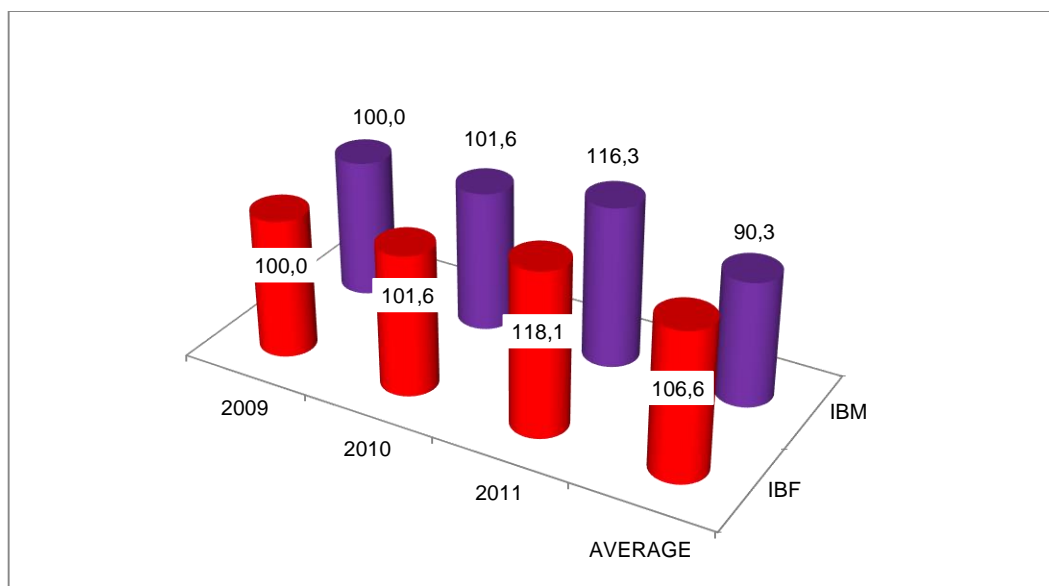


FIG. 5. WHEAT. DOLJ COUNTY - average yield, dynamic (%)

Compared with the regional situation, Dolj County recorded positioning variables, as follows (Fig. 6):

- levels above par in 2010 also for the average period - 105.6 and 100.04% respectively;
- subunit levels in 2009 and 2011 - 99.0 and 94.8% respectively.

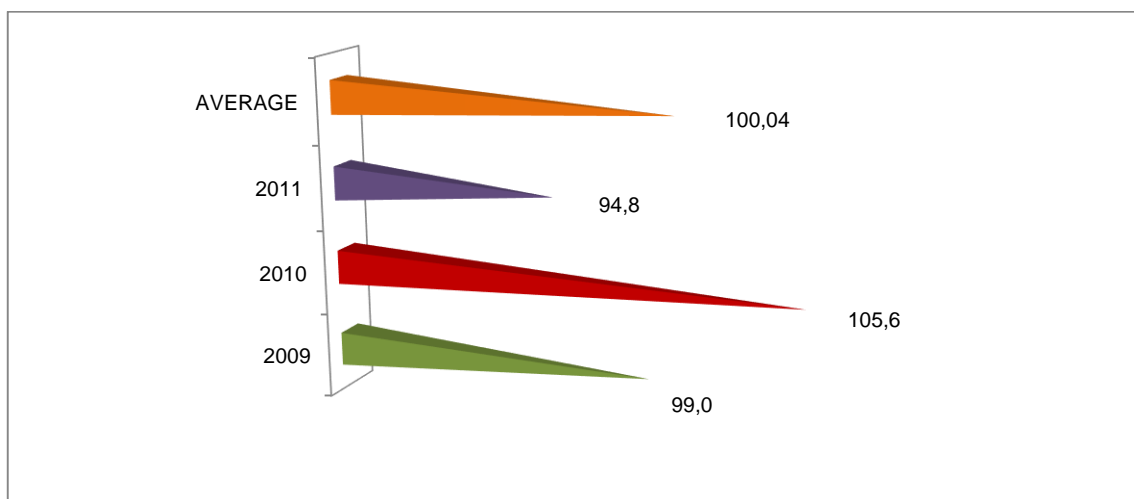


FIG. 6. WHEAT. DOLJ COUNTY. Average production - positioning compared to regional level (%)

CONCLUSIONS

- For Dolj county, wheat was the main crop, which owns 43.78% of the arable land (406531.3 ha) and 60.48% of the area cultivated with cereals (294244 ha). Wheat surpassed, in terms of areas, the culture of corn with 94687.3 ha held only 32.18% of the area cultivated with cereals of the county;
- Surface evolved uneven, increases of 10.8% in 2010, being followed by declines of 4.2% in 2011 (compared to previous terms of dynamical series);
- Wheat production has experienced an upward trend, this is characterized by successive annual increases of 1.12 and 1.11 times respectively in 2010 and 2011 compared with previous terms of dynamical series;
- at county level wheat contributed with 52.24% to the establishing of grain total production (935852.7 t), exceeding the specific situation of corn (391068.7 t - 41.78%);
- Average production per hectare has evolved upward, the absolute growth being 466 kg from 2009 to 2011;
- The level of the indicator is smaller than the one of corn crop, where was obtained 4130kg / ha;
- we can observe a somewhat balanced positioning of the county in the regional context, in terms of cultivated areas and total production obtained (average share alike - 46.6%);
- Neither in terms of intensification Dolj county not constitute a dynamic factor in the region, he exceeded only 0.04% of the regional average production per hectare.

BIBLIOGRAPHY

1. **Barbu C., Pânzaru R.L.**, 2000, *Agrarian Economy*, Hyperion Publishing House, Craiova
2. **Dona, I.**, Rural economy, 2000, *Economic Publishing House*, Bucharest
3. **Gavrilescu D. contributors**, 2000, *Agro food economy*, Expert Publishing House, Bucharest ,
4. **Ștefan G.**, 2006, *Agrarian Economy*, Junimea Publishing House, Iași
5. **Ștefan G., Toma A.D., Pânzaru R.L.**, 2006, *Economy and agro food policies*, Alfa Publishing House, Iași
6. <http://www.dolj.insse.ro>